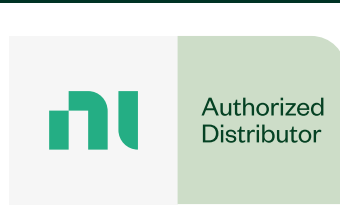


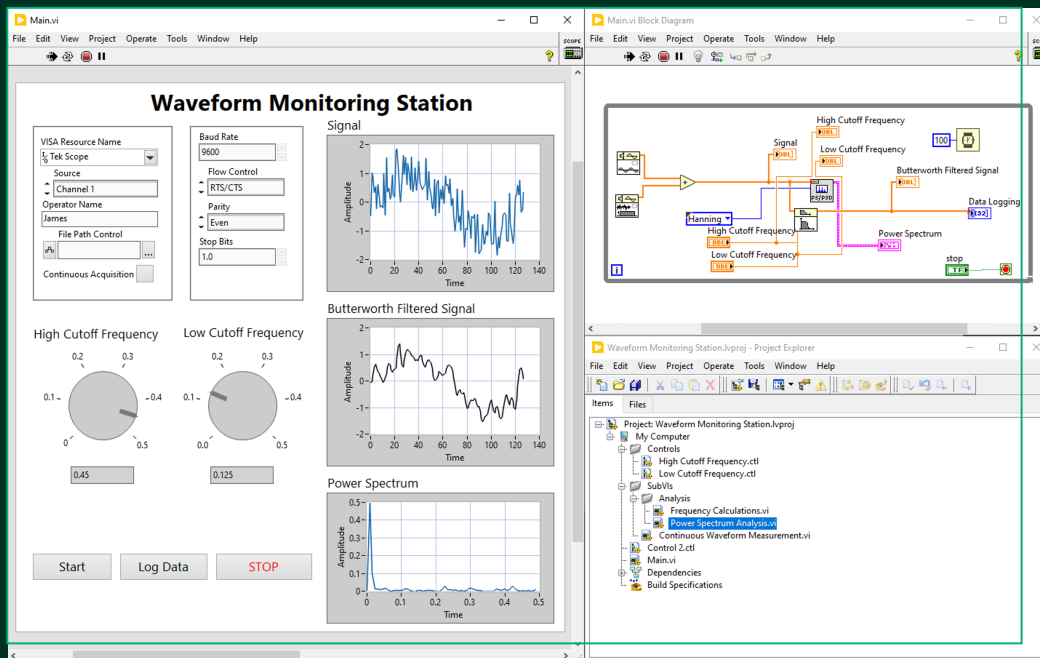


Ihr Ansprechpartner /
Your Partner:

dataTec AG
E-Mail: info@datatec.eu
www.datatec.eu



Mess- und Prüftechnik. Die Experten.



NI LabVIEW

The Most Productive Development Environment For Test And Measurement

The Benefits of Standardizing on LabVIEW

LabVIEW has what you need to build automated test systems, fast. Outpace the competition with LabVIEW – unlike other solutions:

- LabVIEW can connect to any instrument, regardless of vendor
- LabVIEW has a native user interface for monitoring and controlling test
- LabVIEW has thousands of engineering analysis functions
- LabVIEW works with other languages, such as Python, C, and .NET

Companies that use LabVIEW benefit from improvements in development time and code reuse.

9x

Faster
Development
Time

80%

Code Re-Use
Across Projects

Develop Automated Test & Measurement Systems With LabVIEW

Maximize Productivity

- **Graphical Programming**—Build your test system using an intuitive, flowchart-like data flow.
- **Customizable User Interfaces**—Create custom UIs with pre-built objects for real-time data display, user input, and interactive analysis.
- **Active Debugging**—Detect errors faster as LabVIEW re-compiles code after every action so you can easily identify and resolve problems. No last-minute surprises.

Integrate Everything

- **Hardware Access**—Connect to any piece of hardware with thousands of drivers for third-party instrumentation.
- **Code Re-Use**—Call code written in Python, C, MATLAB®, and .NET
- **Protocol Support**—Exchange data between applications using TCP/IP, UDP, serial, IrDA, Bluetooth, Modbus, SMTP, and more.

Increase Capabilities

- **Real-Time and FPGA Modules**—Utilize add-ons for applications that require embedded and FPGA hardware.
- **Automated Reporting**—Share test results by generating reports for Microsoft Office or writing to a database
- **Application Builder**—Create and deploy your code as stand-alone applications for others to use, in just a few clicks.

Ensure Your Success

- **Learning**—Don't know how or where to start? We have flexible training options, tutorials, and courses to help you create your first application, acquire data, connect to hardware, and more!
- **Community**—Join a strong community of over 300k users. Rely on an active online network and colleagues for advice. Over 30 years in the making.
- **Support**—Get help when you need it. Your subscription includes access to support engineers who are ready to speed up troubleshooting.



Select Your LabVIEW Edition

LabVIEW Base

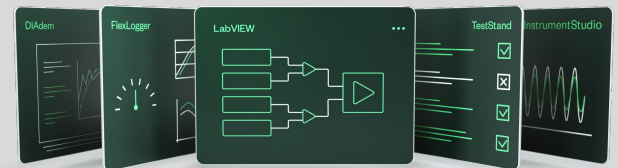
- Recommended for building simple test and measurement applications.
- Part Number: 784503-35

LabVIEW Full

- Recommended for applications that require advanced analysis or signal processing.
- Part Number: 784522-35

LabVIEW Professional

- Recommended for engineers who need tools for software engineering, code deployment, distribution, and reporting.
- Part Number: 784584-35



Or Get LabVIEW Plus More in the LabVIEW+ Suite

The LabVIEW+ Suite is a collection of LabVIEW plus, more software that provides purpose-built tools to automate measurement, analysis, and test. The software works together to save you time.

Part Number: 788509-35

PART NUMBERS LISTED ARE FOR DOWNLOADABLE MEDIA FOR WINDOWS, FIND MORE INFORMATION ONLINE OR THROUGH YOUR DISTRIBUTOR.

LABVIEW, DIADEM, FLEXLOGGER, INSTRUMENTSTUDIO, AND TESTSTAND ARE MARKS OWNED BY ONE OF THE COMPANIES IN THE TEST & MEASUREMENT BUSINESS UNIT OF EMERSON ELECTRIC CO. EMERSON AND THE EMERSON LOGO ARE TRADEMARKS AND SERVICE MARKS OF EMERSON ELECTRIC CO.

©2024 NATIONAL INSTRUMENTS. ALL RIGHTS RESERVED.



Ihr Ansprechpartner /
Your Partner:

dataTec AG
E-Mail: info@datatec.eu
>>> www.datatec.eu

